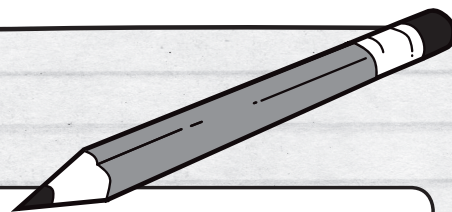


BIG DRAW NEAR

Your Name...



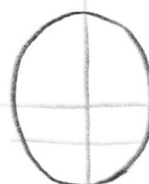
BIG IDEA: DRAW NEAR

BIG WORD: "But it is good for me to draw near to God; I have put my trust in the Lord God, That I may declare all Your works." - Psalm 73:28 (NKJV)

Learn to draw God's best creation, people!



1. Draw a head as an oval shape



2. Through the middle, lightly draw a horizontal line and a vertical line. Then a third line across the lower half.



3. Draw eyes across the first horizontal line - don't forget eyebrows.



4. Draw the mouth across the lower half line.



5. Draw the nose over the vertical middle line.



6. Add hair, if the hair doesn't cover the ears, draw them at the middle line.

Spot the 8 differences



FOR PARENTS!

Use these questions to kick start discussion with your children!

1. Why did God create people?
2. Why were people separated from God?
3. How did God make a way for people to be close to Him?

BIG POINT: Today I learnt that...

